

**COMBINED MW AND/OR PIR MOTION SENSOR  
1-10V THREE STEP DIMMING, IP65, SURFACE MOUNT**

These multi-function Microwave/PIR sensors primary function is to save energy when the detection area is not occupied. They require the controlled fitting to have a 1-10VDC dimmable driver and can control up to 800W of LED load. Parameters can be set using a 16-channel rotary wheel. Additional functionality is achieved using the optional remote-control programming tool

**The light fittings being controlled require a 1-10VDC driver for 3-Step Dimming Functionality. Without, they will operate in on/off only, adding the hold and standby times together**

Parameters: Detection Sensitivity, Lux Switching Level, Hold Time, Standby Light Level, Standby Time Before Off  
Note: Please see data page 2 for specific parameter settings available using the Microwave Sensor Wheel Settings and the optional Remote-Control Programmer



**Applications:**

Primarily used in large buildings such as:

- Manufacturing plants
- Farm buildings
- Storage areas
- Racking areas
- Warehouses
- Show rooms
- Large garages
- Aircraft hangers
- Bus and coach depots

**Construction:**

All polycarbonate construction

**Features and Benefits:**

- This multifunction sensor utilises both Microwave and Passive Infra-Red technology. By default the sensor is set to trigger on Microwave OR PIR and requires the HRC-11 programming tool to avail of the other sensing technology options
  - When set to Microwave sensing alone it very sensitive, with extended sensing distance and will sense very small movement of anything including through some partitions
  - When set to PIR it will only detect movement of a heat signature so is not false triggered so easily when the fitting it is attached to swings on its chain due to air movement
  - Combination of MW and PIR provide the advantages of both technologies to overcome any disadvantages of either
- The high specification Fresnel lens combined with Microwave and PIR detection technologies provide a 360 degree cone shaped detection pattern for accurate detection of movement in the area
- The sensor is IP65 rated so is ideal for installation in damp or dusty environments
- It is also IK10 so will take the occasional knock from a fork-lift or pallet of goods
- It also has an adjustable bracket which allows it to be mounted to most light fittings
- The sensor can be mounted between 4 and 15m high so is ideal for control of lighting in high and low bay areas as well as manufacturing, assembly and packing spaces
- The sensor utilises an intelligent photocell which enables it to calculate the ambient light level. It will switch the lighting on if ambient light level is less than required lux switching point, and off if the ambient is above the lux switching point for >5 minutes. This provides additional energy savings as ambient light levels change throughout the day
- For bespoke operation and specific building use and applications, an optional Remote-Control Programmer is available which:
  - Provides single button programming of sensors from ground level without the need to physically access the sensor
  - Allows the sensing technology used to be set to:
    - Microwave ONLY
    - PIR ONLY
    - Microwave OR PIR
    - Microwave AND PIR
  - Provides access to a range of extended settings for:
    - Detection range which provides control of the range of sensing so that lighting is only switched on in the areas required. For example, sensitivity can be set so that movement in a manufacturing area will not switch lighting on in the parts storage areas
    - Lux switching point and standby light levels
    - Hold and standby delay times most suited to the operation of the building

PLEASE NOTE: INFORMATION IN THIS DOCUMENT MAY BE SUBJECT TO CHANGE WITHOUT PRIOR NOTICE

IRE: TEL: +353 1 709 9000  
AUS: TEL: +61 7 3890 5444

WEB: WWW.ROBUS.COM  
WEB: WWW.ROBUS.COM.AU

## LIGHTING CONTROLS

# ROBUS®

## COMBINED MW AND/OR PIR MOTION SENSOR 1-10V THREE STEP DIMMING, IP65, SURFACE MOUNT

Product Code:	RPIRMW-HIM31S
Maximum Load Incandescent/fluorescent/LED (W):	1,000/ 800/ 800
MIN/MAX Mounting Height (m):	2.5-15
Detection zone diameter @ Max mounting height (m):	5-18
Detection Angle (deg):	360
Warranty (yrs):	5
Ingress Protection (IP):	65
Impact Rating (IK):	10
Operating Temperature (°C):	-20 ≤ Ta ≤ +40
Operating Voltage (Vac):	220-240
Height (mm):	94
Width (mm):	75
Length (mm):	163
Box Qty:	1
Weight (kg):	0.3

### Rotary Switch Settings

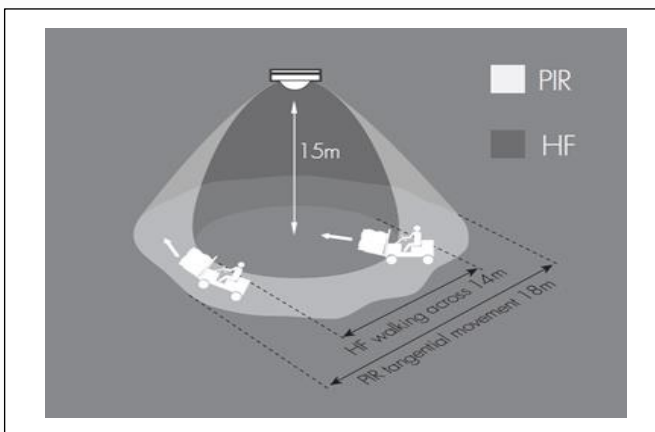
A rotary switch is built inside the sensor.  
Total 16 channels available:



Channel	Detection range	Hold time	Stand-by time	Stand-by dimming level	Daylight threshold
0	100%	5s	10s	10%	Disable
1	100%	1min	5min	10%	2Lux
2	100%	5min	10min	10%	10Lux
3	100%	5min	30min	10%	30Lux
4	100%	5min	0	Disable	10Lux
5	100%	5min	+∞	10%	30Lux
6	100%	5min	+∞	30%	Disable
7	100%	10min	10min	10%	2Lux
8	100%	10min	30min	10%	10Lux
9	100%	10min	+∞	10%	30Lux
A	100%	10min	+∞	30%	Disable
B	75%	10min	+∞	10%	30Lux
C	50%	10min	+∞	10%	10Lux
D	100%	30min	+∞	10%	50Lux
E	100%	30min	+∞	30%	Disable
F	100%	5s	10s	10%	20Lux

Note: settings can also be changed by remote control. The last action controls.

### Detection Zone Diagram:



### Settings available using the

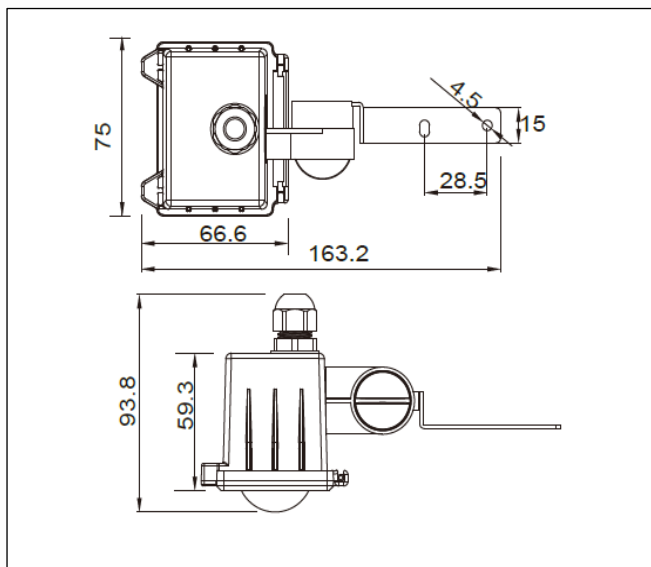
### HRC-11 Remote Control Programming Tool

Detection sensitivity (%):	10/50/75/100
Daylight threshold (lx):	Disable/2/10/50/100/300/500/ambient
Hold time:	2sec/30sec/1min/5min//10min/15min/20min/30min
Standby level before off (%):	10/20/30/50
Standby time before off:	0sec/10sec/1min/5min/10min/30min/60min/∞
Remote range (m):	12m Max
Memory Function:	Enter single program to memory button, to allow for rapid programming of additional sensors
Sensing Technology:	MW Only, PIR Only, MW & PIR, MW or PIR

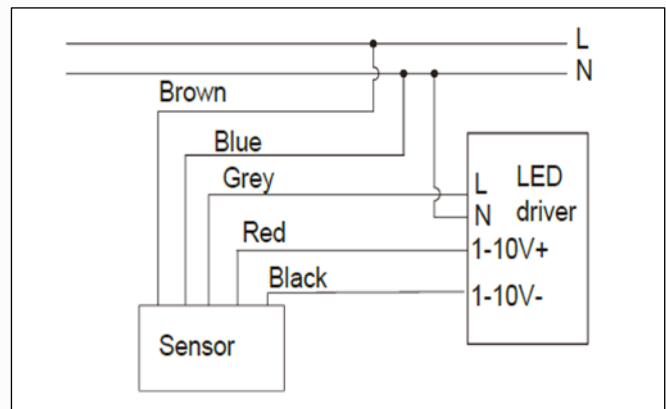
### Standards & Approvals:

Complies with: EN 60669-1, EN 60669-2-1, EN 55014-1, EN 55014-2, EN6100-3-2, EN6100-3-3

### Dimensions:



### Wiring Diagram:



PLEASE NOTE: INFORMATION IN THIS DOCUMENT MAY BE SUBJECT TO CHANGE WITHOUT PRIOR NOTICE

IRE: TEL: +353 1 709 9000  
AUS: TEL: +61 7 3890 5444

WEB: WWW.ROBUS.COM  
WEB: WWW.ROBUS.COM.AU

LED GROUP EUROPE · AUSTRALIA · ASIA · MIDDLE EAST · AFRICA